



# Pharmaceris **R**

DERMOCARE FOR ROSACEA SKIN



## PERMANENT REDNESS REDUCING CREAM

[with a soothing complex of  
**Ca<sup>2+</sup>**]

**REDNESS REDUCING  
NIGHT CREAM**

**CALM-ROSALGIN**

**NEW**



Pharmaceris. Dermoinnovations for problem skin.  
[www.pharmaceris.com](http://www.pharmaceris.com)



# PERMANENT REDNESS REDUCING CREAM WITH A SOOTHING COMPLEX OF CALM-CALCIUM $\text{Ca}^{2+}$

## ACTIVE INGREDIENTS:

InnoTetrapeptide™ | thioproline | olive leaf extract | Canola oil | Calm-Calcium™



30ml

## HOW THE PRODUCT WORKS

- Effectively reduces redness and controls erythema.
- Restores the physiological balance of the skin.
- Soothes irritations and relieves redness.
- Protects hypersensitive skin from external factors.

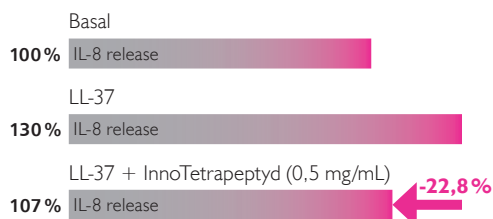
## EFFECTIVE AND INNOVATIVE INGREDIENTS

- InnoTetrapeptide™** – an innovative peptide designed to minimize the appearance of redness caused by inflammatory response. It inhibits the release of interleukins which are involved in inflammatory response.\*.
- Thioproline** is a potent antioxidant. It promotes epidermal regeneration. It has an anti-aging and anti-inflammatory effect. It also protects skin from environmental aggressors.
- Olive leaf extract** has a detoxifying effect – it promotes the removal of metabolites from cells to make skin more resistant to stress. The ingredient was inspired by a Nobel Prize in biology.
- Calm-calcium  $\text{Ca}^{2+}$**  calcium ions soothe and relieve irritations and have antiseptic properties. Designed for sensitive skin with rosacea.

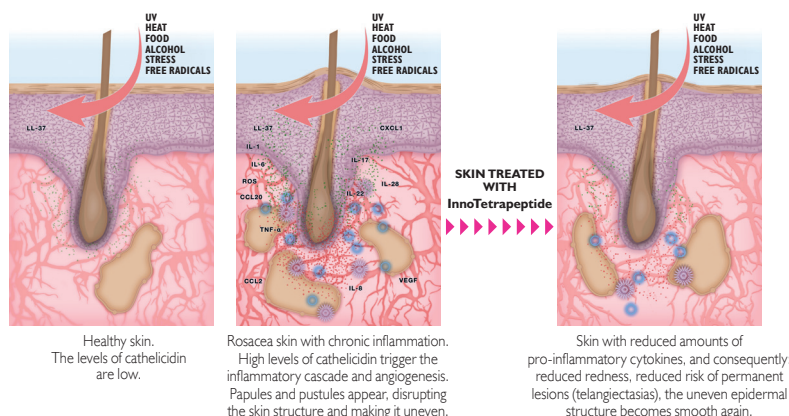
HYPOALLERGENIC. FREE OF PRESERVATIVES, PARABENS, FRAGRANCES AND COLOURANTS.

## DERMATOLOGICAL FORMULA DEVELOPED FOR ROSACEA SKIN

### RESEARCH SHOW THAT InnoTetrapeptide HELPS INHIBIT THE INFLAMMATORY CASCADE IN THE SKIN IN ORDER TO REDUCE REDNESS AND VISIBILITY OF TELANGIECTASIAS

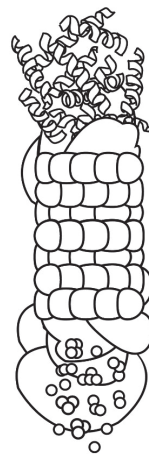


\* In vitro tests on control human keratinocytes exposed to cathelicidin LL-37 and cathelicidin LL-37 with InnoTetrapeptide. After 5-hour incubation of the cells with InnoTetrapeptide in 37°C, the concentration of IL-8 was measured using the ELISA test.



### BOOSTING CELL METABOLISM THROUGH DETOXICATION IN ORDER TO REDUCE THE RISK OF INFLAMMATION

Olive extract activates proteasomes – proteins responsible for the degradation of damaged proteins in the skin cells.



Accumulation of damaged proteins in the cells may promote inflammation, and in consequence exacerbate skin lesions or make them permanent.

Protein degradation reactions occur in proteasomes.

Detoxification leads to decomposition of damaged proteins into small peptides which may be used for the production of new proteins and reconstruction of cell structures damaged by inflammation.